



**W fenders**

## W FENDERS



W fenders are designed for use in extreme conditions and to absorb excessive bumps and knocks. This type of fender is very suitable for application on the bow and stern of tugs, workboats and icebreakers. The grooves on the top of the fender provide extra grip and low pressure while pushing. With two flexible legs also allow for easy installation of the W fender with a large or small radius by means of guide rods.

### Types

W fenders are made from extremely durable rubber. Lengths are often no longer than 2000 mm and they are produced by means of compression-moulding. The most common dimensions are kept in stock and can therefore be delivered at short notice. W fenders, M fenders and keyhole fenders are not interchangeable.

### Processing

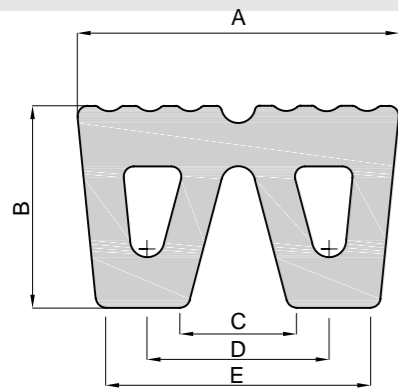
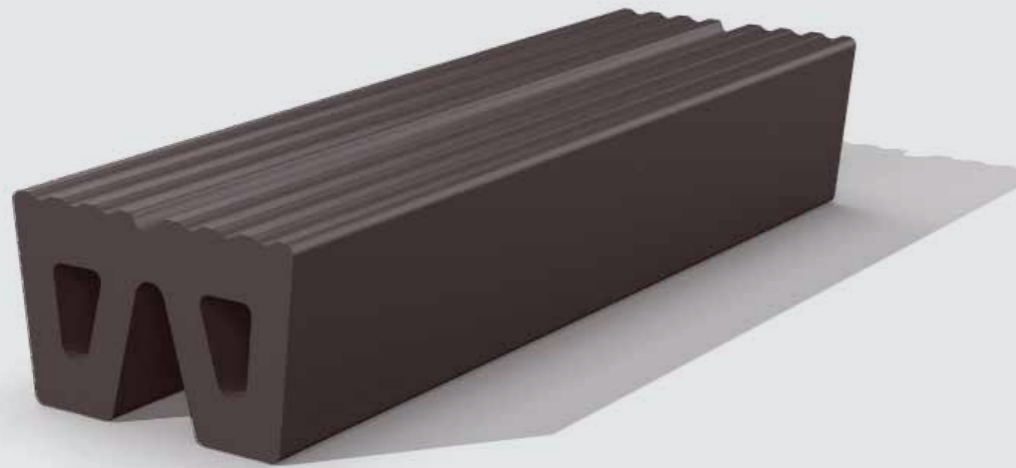
W fenders are relatively easy to install. Attachment is often done with the help of fixing pins through the two standard holes. W fenders are available in various lengths and they can be cut at an angle. If the fenders are longer than one meter an opening for a support strip can be added.

### Applications

W fenders are used to protect:

- tugboats
- workboats
- icebreakers
- barges
- supply boats
- corners of quays
- bridge sections

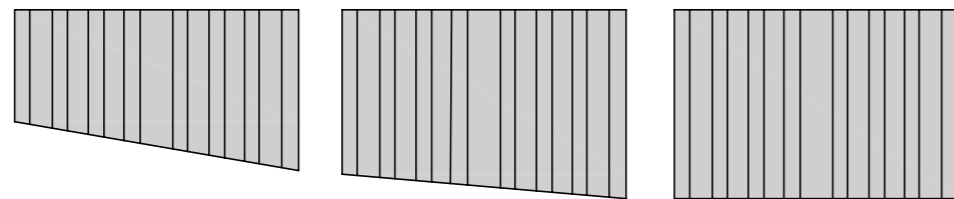




Standard dimensions

A (mm)	B (mm)	C (mm)	D (mm)	E (mm)	Weight (kg/m)
320	200	100	180	280	51
400	250	110	220	350	81
480	300	135	265	420	120
500	360	125	265	390	156
500	450	90	250	420	180

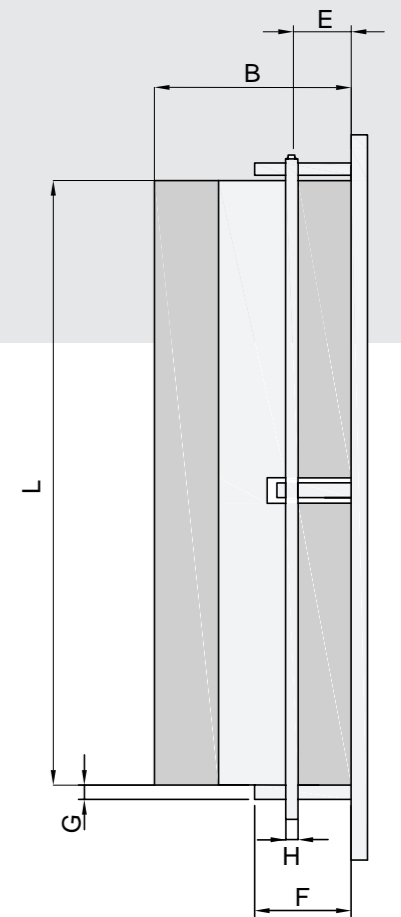
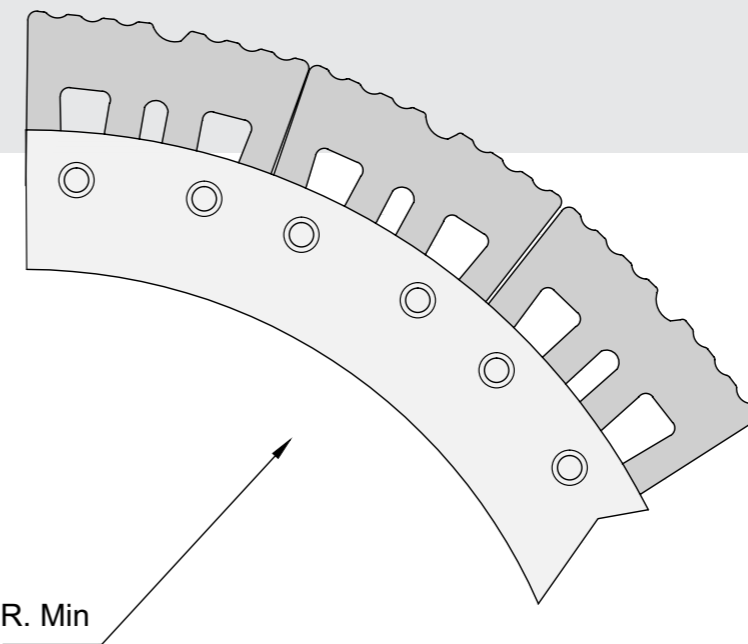
Other non-standard dimensions available on request.



Bow fenderset cut to size



Mounting method and dimensions



B (mm)	E (mm)	F (mm)	G (mm)	øH (mm)	L max. (mm)	Radius min. (R)
200	67	100	20	ø25	2000	600
250	75	120	20	ø30	2000	800
300	90	140	20	ø40	2000	900
450	100	150	20	ø40	2000	1000

General guidelines for mounting. For reference purposes only.

Your local representative:

